



WYATT HOUSE

HENSOL CASTLE PARK
HENSOL





HENSOL CASTLE PARK

HENSOL, CF72 8GH - £425,000



3 bedroom(s)



2 bathroom(s)



1517.00 sq ft

An exceptionally stylish contemporary first floor apartment set within Hensol Castle Residential Development. This modern and spacious apartment comprises of a large living dining room with floor to ceiling windows overlooking the golf course, a newly refurbished kitchen with Nef appliances, two double bedrooms each with its own ensuite, a third bedroom and an additional Cloakroom WC. Conveniently situated for access to M4 motorway.

This property is offered with no onward chain.

PROPERTY SPECIALIST

Mrs Ruby Ledley


ruby@jeffreygross.co.uk

02920499680

Valuer





| Energy Efficiency Rating | | |
|---|---|-----------|
| | Current | Potential |
| Very energy efficient - lower running costs | | |
| (92 plus) A | | |
| (81-91) B | | |
| (69-80) C | | |
| (55-68) D | | |
| (39-54) E | | |
| (21-38) F | | |
| (1-20) G | | |
| Not energy efficient - higher running costs | | |
| England & Wales | EU Directive 2002/91/EC  | |

















HALLWAY

WC CLOAKROOM

BEDROOM 1

3.68m x 3.25m (12'1 x 10'8)

EN-SUITE

LIVING ROOM

6.17m x 5.05m (20'3 x 16'7)

BEDROOM 2

3.56m x 3.07m (11'8 x 10'1)

EN-SUITE

KITCHEN

3.96m x 2.62m (13 x 8'7)

BEDROOM 3

3.48m x 2.46m (11'5 x 8'1)

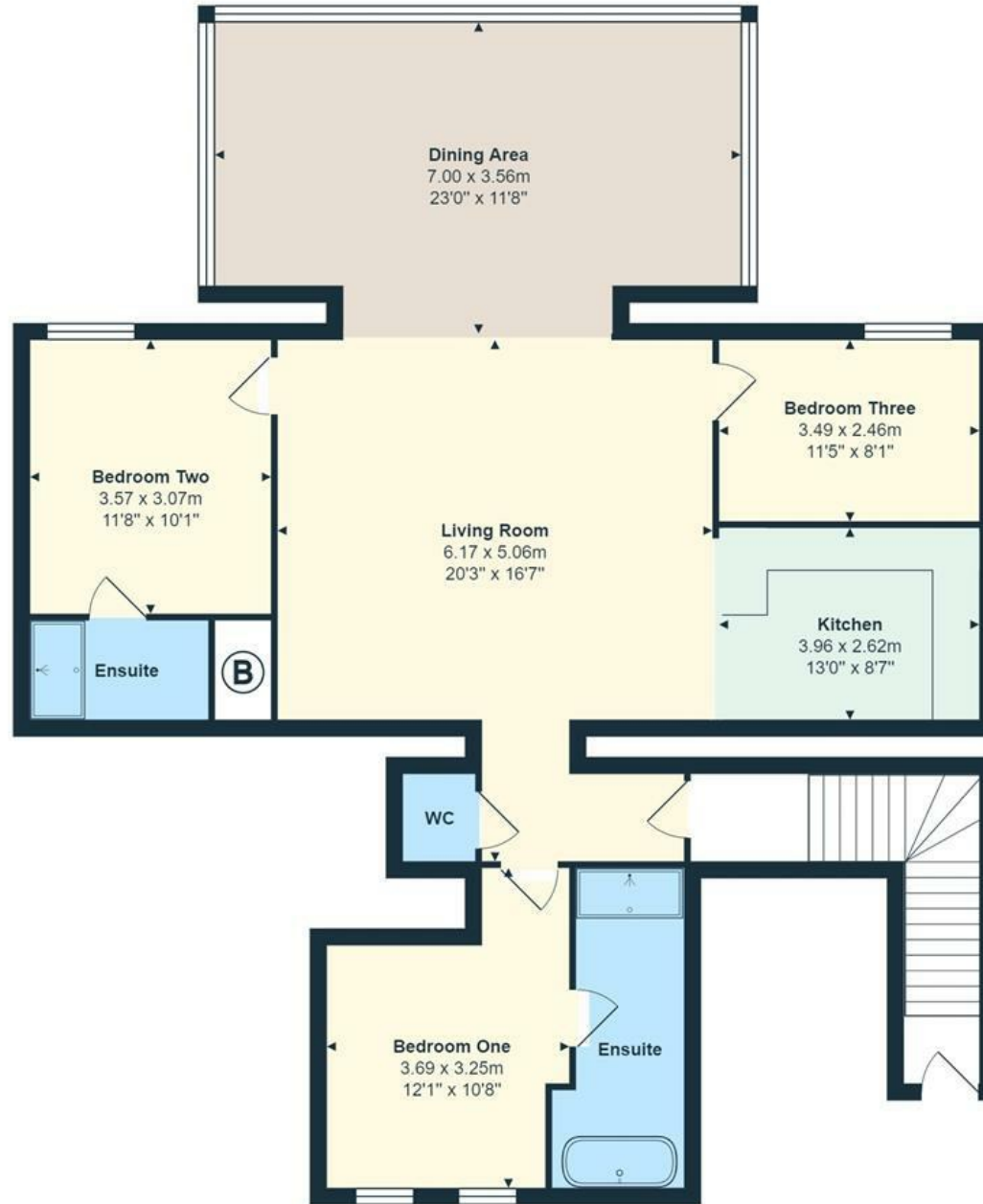
DINING AREA

7.01m x 3.56m (23 x 11'8)

”

Comments by Mrs Ruby Ledley

”



www.jeffreyross.co.uk

Jeffrey Ross